



Beechworth circa 1857

Goldfields Cottage is an original miner's cottage, circa 1857, situated in the heart of the award winning historic gold mining town of Beechworth.



Step inside this period weatherboard holiday cottage and the modern luxurious interior will appeal to the most discerning guests.

The self contained accommodation consists of one twin and two queen rooms, all supplied with luxury linen, Egyptian cotton and quality Australian wool quilts.



www.goldfieldscottage.com

For bookings:



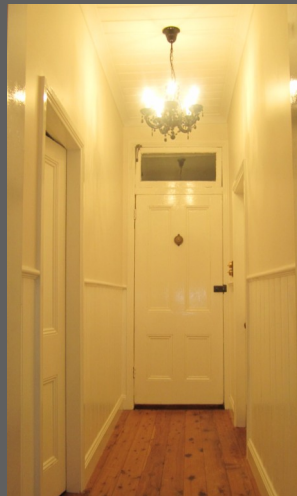
0418 313 512 (Jackie- manager)



accommodationmanagement@bigpond.com



The large lounge is relaxing and comfortable with leather sofas, split system air-con and a large log fire. The kitchen is modern, fully equipped and has the original open fireplace.



Goldfields Cottage is just one block from the bakery, gourmet dining venues and boutique shops that Beechworth is famous for.

It is just a short walk to the historic precinct and is close to the Bright to Wangaratta rail trail.

**26 High Street
Beechworth**

**Enquiries:
0418 313 512**

**Bookings:
Stayz.com.au
Beechworthonline.com.au**

